

GPS and Cell Phone in a Coca-Cola® Can



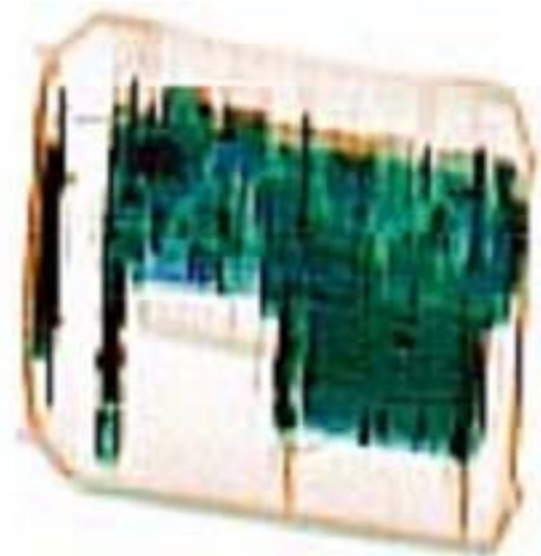
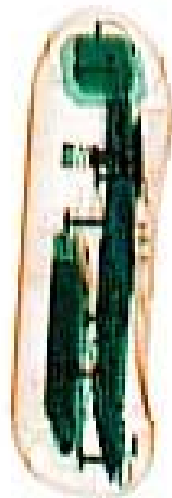
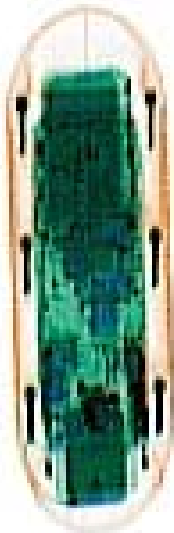
Starting shortly and running through the summer, Coca-Cola® will be running a promotion that involves having a GPS and Cell phone in a soda can.



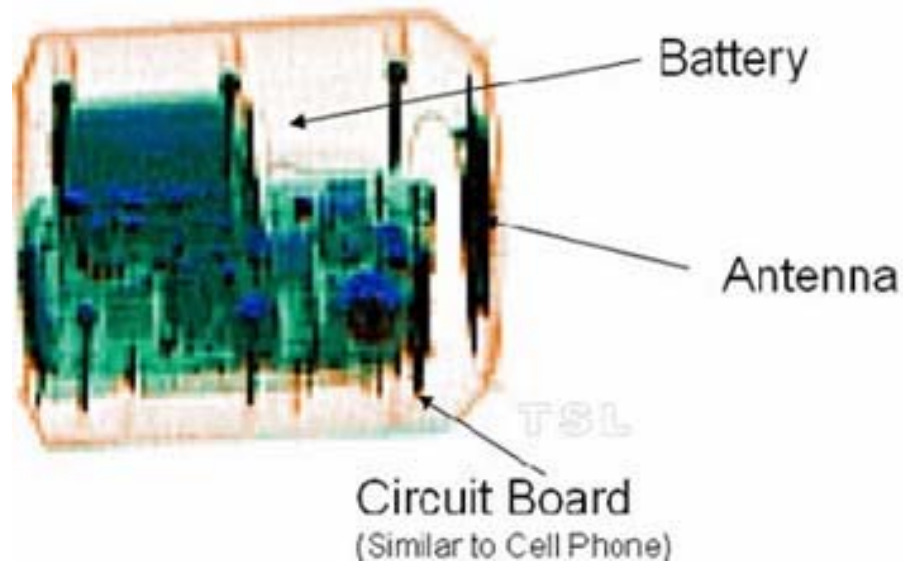


The chances of running into one of these cans is small, but you need to be familiar with their appearance.

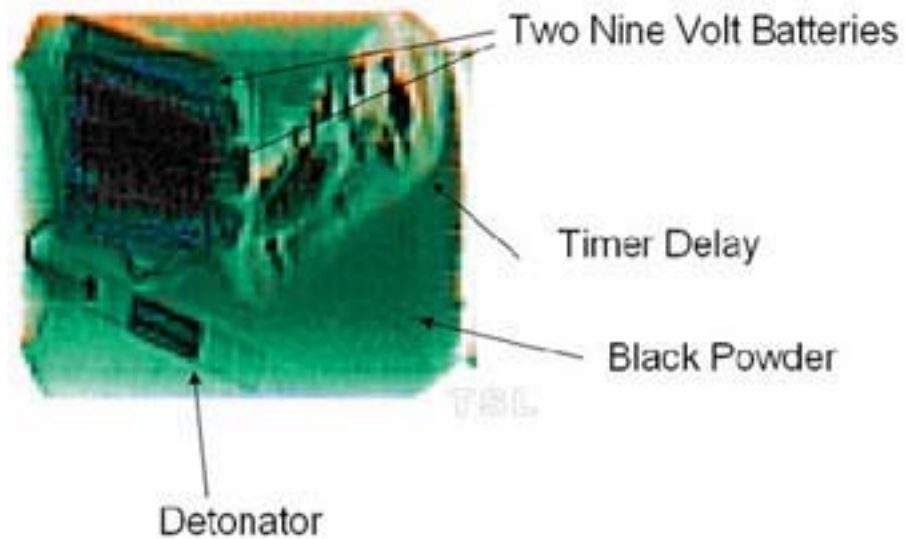
Because the GPS and Cell Phone involve batteries, power supply, and electronics components we are sharing the pictures and x-ray images with you.

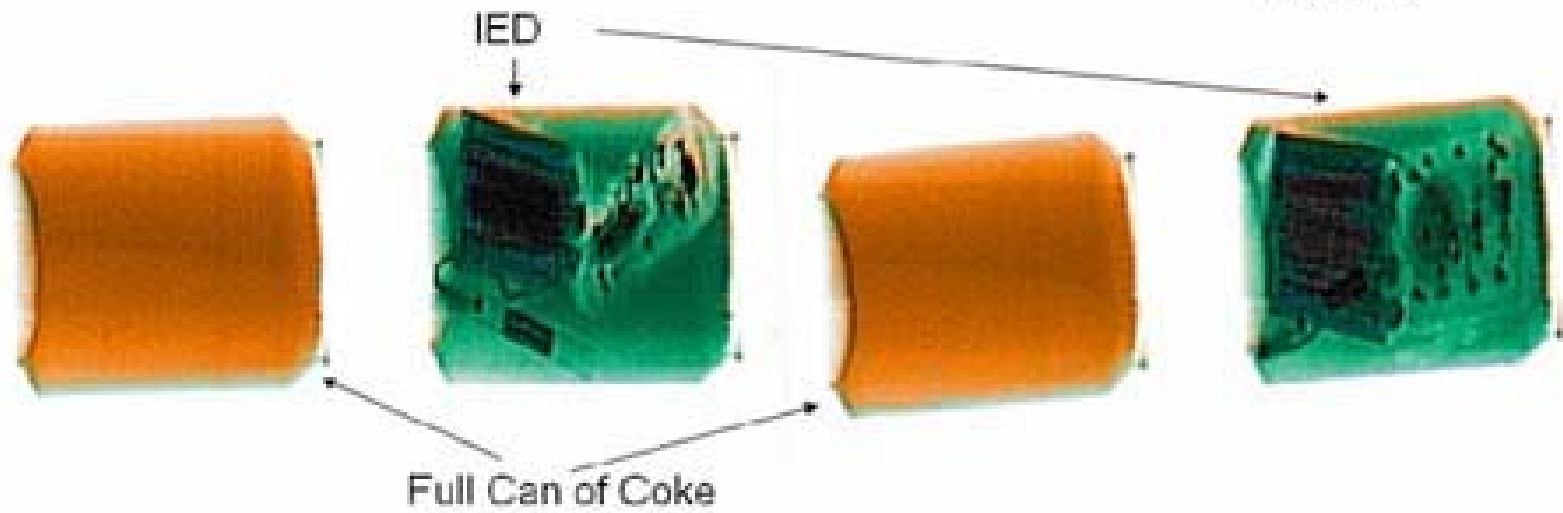
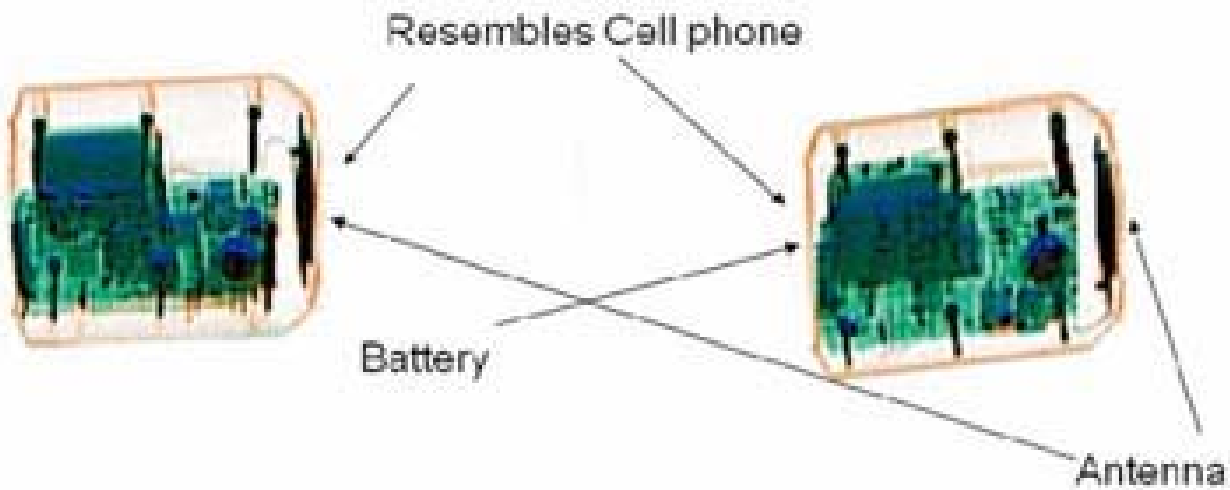


Although the actual number of these cans is relatively low, a few hundred nationwide, you need to be aware of them because we all know one will turn up in the wrong place at the wrong time.



For comparison, here is an x-ray image of a soda can with an IED inside.





The information provided here was a combined effort of a number of offices within TSA and the cooperation and assistance of the Coca-Cola® Company.

The folks at the Transportation Security Lab in Atlantic City are responsible for the pictures, x-ray images and the mock IED in a soda can.